



TSX.V:WRR

Walker River Resources





Forward Looking Statements

Certain statements herein may contain forward-looking information within the meaning of applicable securities laws. Forward-looking information appears in a number of places and can be identified by the use of words such as “intends” or variations of such words and phrases or statements that certain actions, events or results “may”, “could”, “would”, “might” or “will” be taken, occur or be achieved. Forward-looking information includes statements regarding the Company’s exploration plans with respect to the Property and the estimation of mineral resources and are subject to such forward-looking risks, uncertainties and other factors which may cause the Company’s actual results, performance or achievements, or industry results, to be

materially different from any future results, performance or achievements expressed or implied by such forward-looking information. Such risks include gold price volatility, change in equity markets, the uncertainties involved in interpreting geological data, increase in costs and exchange rate fluctuations and other risks involved in the gold exploration and development industry. There can be no assurance that forward-looking information referenced herein will prove to be accurate, as actual results and future events could differ materially from those anticipated in such statements or information. Also, many of the factors are beyond the control of Walker River Resources.

Accordingly, readers should not place undue reliance on forward-looking information. All forward-looking information herein are qualified by this cautionary statement. The Company does not undertake to update such forward-looking information except in accordance with applicable securities laws.

The material scientific and technical information contained in this presentation has been reviewed and approved by Dave Nuttal P. Geo, an independent qualified person pursuant to National Instrument 43-101.



The Future of Nevada Gold Production

- The majority of gold deposits occur in the Walker Lane shear zone, which is a 40-100km wide, NW trending structural corridor extending southeast from Reno towards Las Vegas.
- Host to historical gold producers such as the legendary Comstock Lode silver/gold mine which is located to the north of the Lapon Gold Project. The Comstock Lode is one of the richest silver/gold mines ever found and is why today Nevada is known as the "Silver State".

The Walker Lane Shear Zone straddles the border between Nevada and California and has a rich history of exploration and mining.

- Unlike the Carlin trend, where most mines are producing ore of less than a gram of gold per tonne, Walker Lane stands out with exceptional high-grade assays in a relatively unexplored landscape.
- The historical high-grade Esmeralda/Aurora mine, on the Walker Trend and only 25 km to the south-west of Lapon Gold Project.



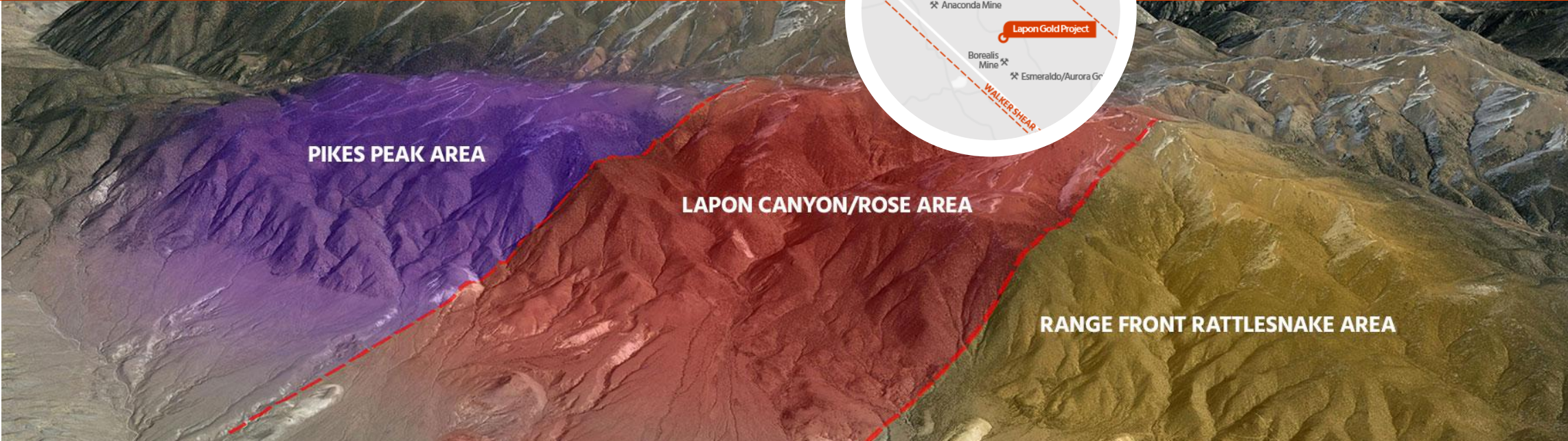


OWNERSHIP: 100%

Fully Drill Permitted with Significant Exploration and Expansion Potential

- Located in mining friendly Nevada, one of the best mining jurisdictions in the world.
- Historical high-grade gold mining in approx. 2000 feet of underground workings.
- Discovery of previously unknown high-grade mineralization and a potential porphyry system at Lapon Canyon, the Hotspot zone.
- Drill Programs from 2016-2024 returned significant new gold mineralization verifying the position and grades of presently inaccessible historical mined out areas. Including, the new discovery of the Hotspot zone.
- Developing a Regional Exploration Play with recently increased land holdings, that cover extensions of known and new mineralized areas at the Lapon Gold Project.
- The Rattlesnake Range front and Pikes Peak claims cover over 8 km of possible extensions of the range front zones to the west, north and south of Lapon Canyon.

The Lapon Gold Project



PIKES PEAK AREA

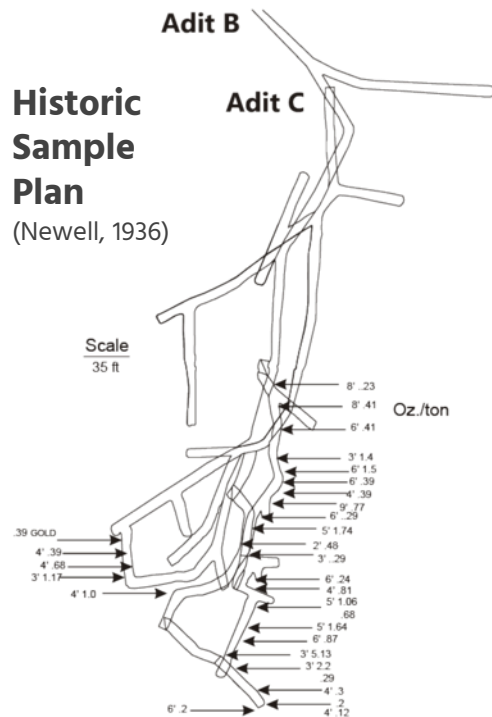
LAPON CANYON/ROSE AREA

RANGE FRONT RATTLESNAKE AREA

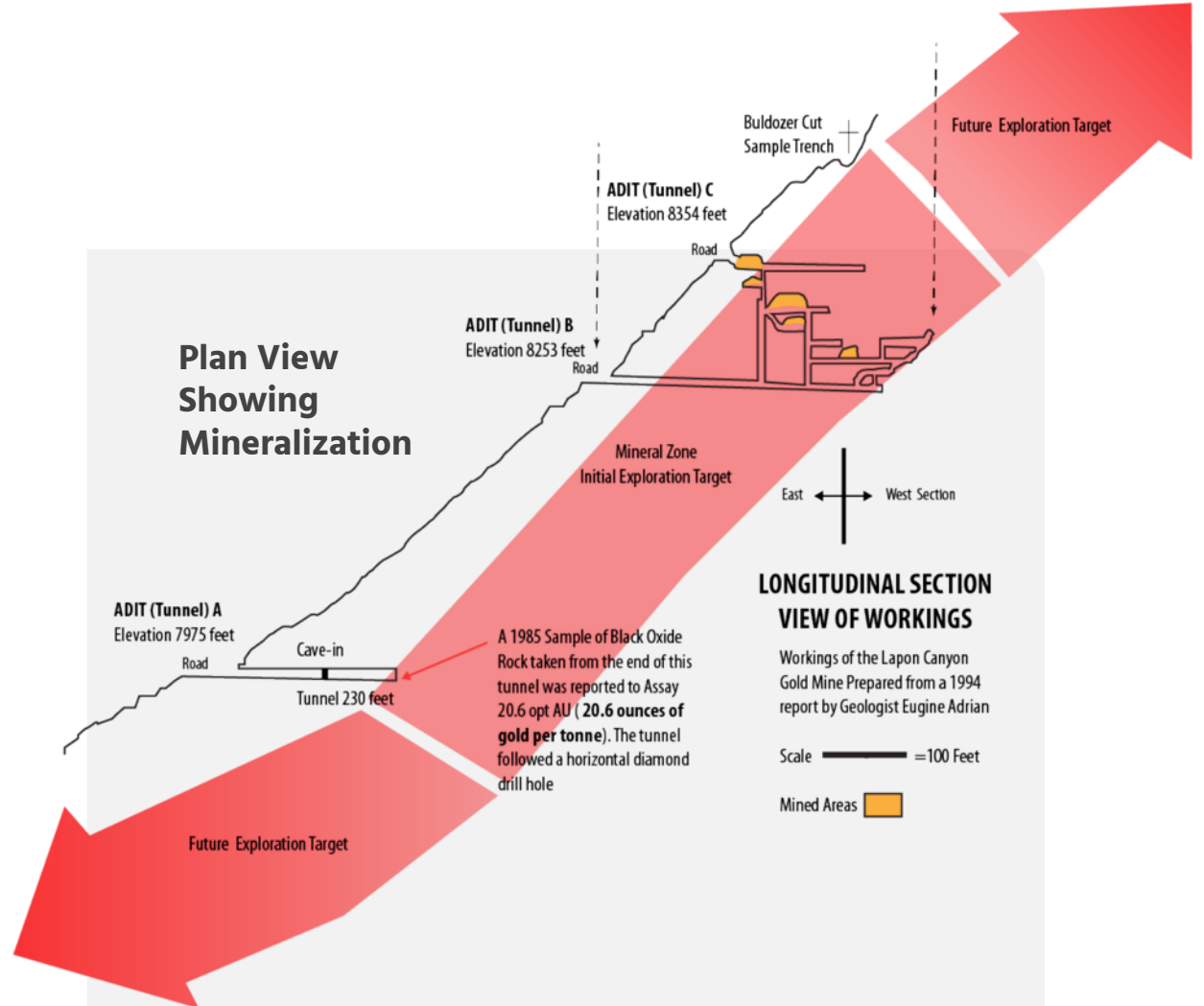


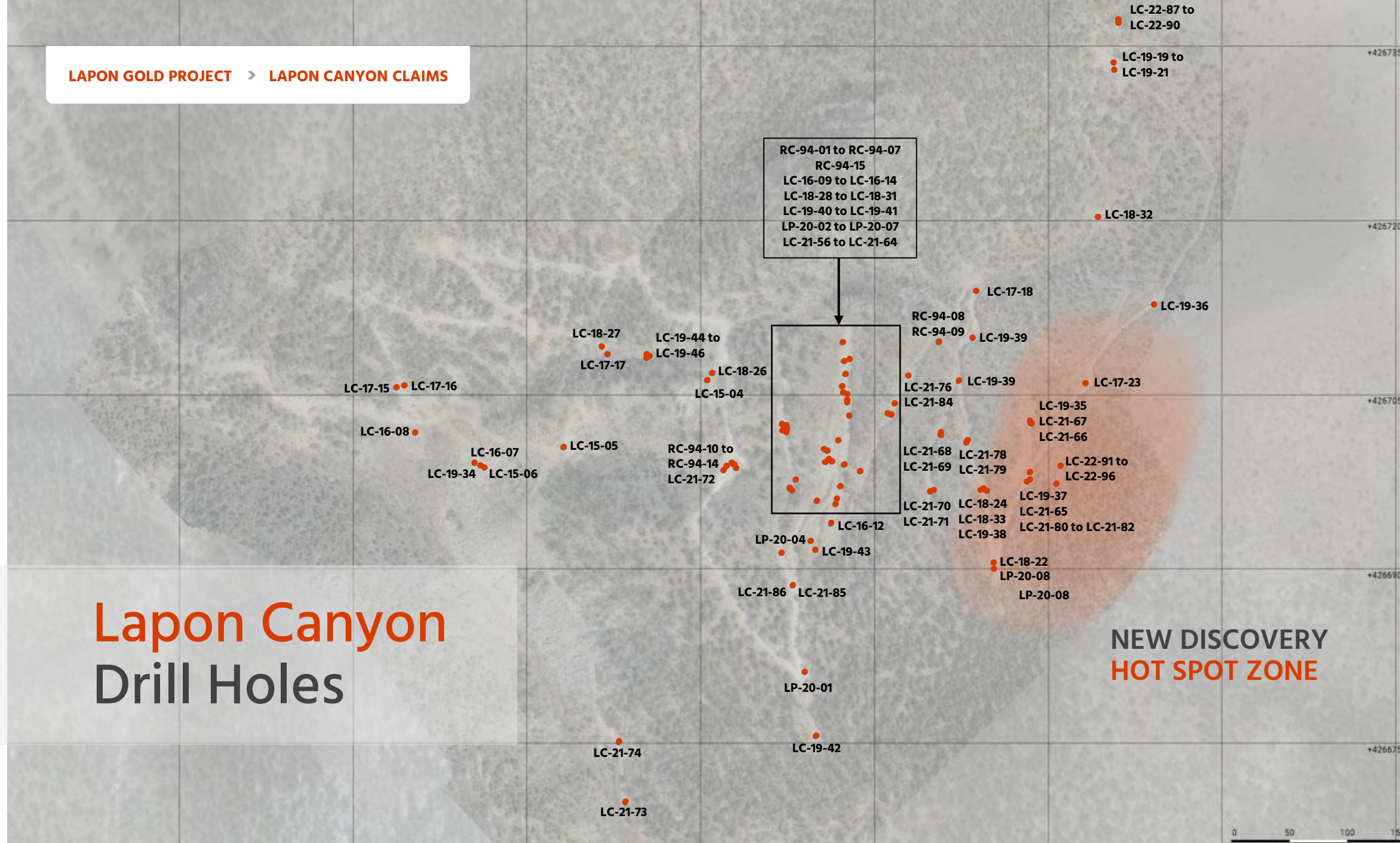
Historic Mine Workings

Historic Sample Plan
(Newell, 1936)



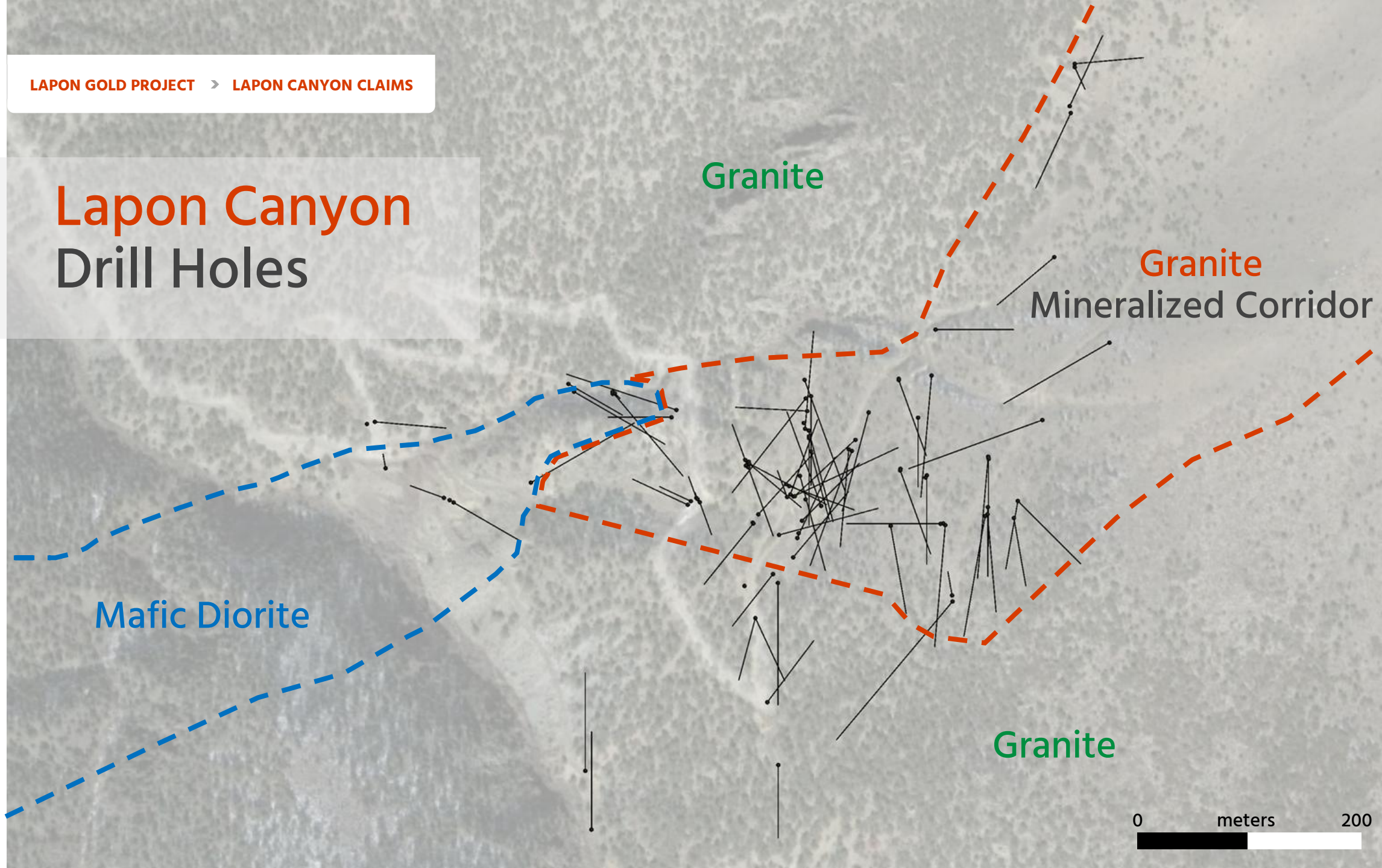
Sample	Cut	oz/ton	g/pt Au
1	8'	0.23	7.86
2	8'	0.23	7.86
3	6'	0.23	7.86
4	3'	1.40	47.82
5	6'	1.50	51.24
6	6'	0.39	13.32
7	4'	0.39	13.32
8	9'	0.77	26.30
9	6'	0.29	9.91
10	0.5'	1.74	59.44
11	7'	0.48	16.40
12	3'	0.29	9.91
13	6'	0.24	8.20
14	4'	0.77	26.30
15	5'	1.06	36.21
16	5'	0.68	23.23
17	5'	1.64	56.02
18	6'	0.87	29.72
19	3'	5.13	175.24
20	3'	2.10	74.47
21	3'	0.29	9.91
22	4'	0.30	10.25
23	4'	0.20	6.83
24	4'	0.10	3.42
25	6'	0.45	15.37
26	???	0.33	11.27
27	4'	0.39	13.32
28	4'	0.68	23.22







Lapon Canyon Drill Holes





The Lapon Gold Project

Lapon Canyon Drill Program Highlights

Drill Hole	From (m)	To (m)	Width* (m)	Assay Au g/t
LC 15-01	7.62	19.82	12.2	40.27
Including	18.29	19.81	1.52	292
LC 15-02	30.48	32	1.53	66.8
LC 15-03	7.62	25.91	18.29	6.88
LC 16-10	0	22.86	21.34	32.47
	54.86	67.06	12.19	67.97
LC 16-12	15.24	38.1	22.86	16.19
LC 17-19	15.24	21.34	6.1	18.61
LC 18-28	15.24	60.96	45.72	12.55
Including	57.91	59.44	1.52	221
LC 18-29	12.19	18.29	6.1	69.86
LC 19-42	65.53	70.1	4.57	220.92
	77.72	79.25	1.52	199.07
LC 19-43	82.3	88.82	1.52	305.25
	86.87	88.39	1.52	73.87
LC 19-45	1.52	3.05	1.52	346.4

* These are Assayed lengths



The Lapon Gold Project

New Discovery Hot Spot Zone Drill Highlights

* These are Assayed lengths

Drill Hole	From (m)	To (m)	Width* (m)	Au g/t
LC 18-23	32	33.53	1.52	34.5
	44.2	50.29	6.1	32.07
	71.63	73.15	1.52	133
	76.2	77.72	1.52	30.7
LC 19-35	33.53	48.77	15.24	1.87
LC 21-65	33.53	62.48	28.96	3.09
Including	33.53	38.1	4.47	7.77
LC 21-80	10.7	59.5	48.8	7.62
Including	55	59.5	4.5	77.62
And	55	56.5	1.5	166.37
And	58	59.5	1.5	65
LC-21-81	10.7	71.6	60.9	5.68
Including	41.2	59.5	18.3	17.76
And	47.3	48.8	1.5	99.78
And	53.4	54.9	1.5	39.98
And	57.9	59.4	1.5	50.98
LC-21-82	0	122	122	1.84
Including	64	111.3	47.3	4.28
And	85.3	122	36.7	3.46
And	85.3	94.5	9.2	8.61
LC-22-91	27.4	60.9	33.5	1.05
LC-22-92	24.4	122	97.6	1.65
Including	57.9	60.9	3	26.95
LC-22-93	39.6	64	24.4	1.25
LC-22-94	32	105.2	73.2	1.05



The Lapon Gold Project

Lapon Gold Project Drill Program

2025

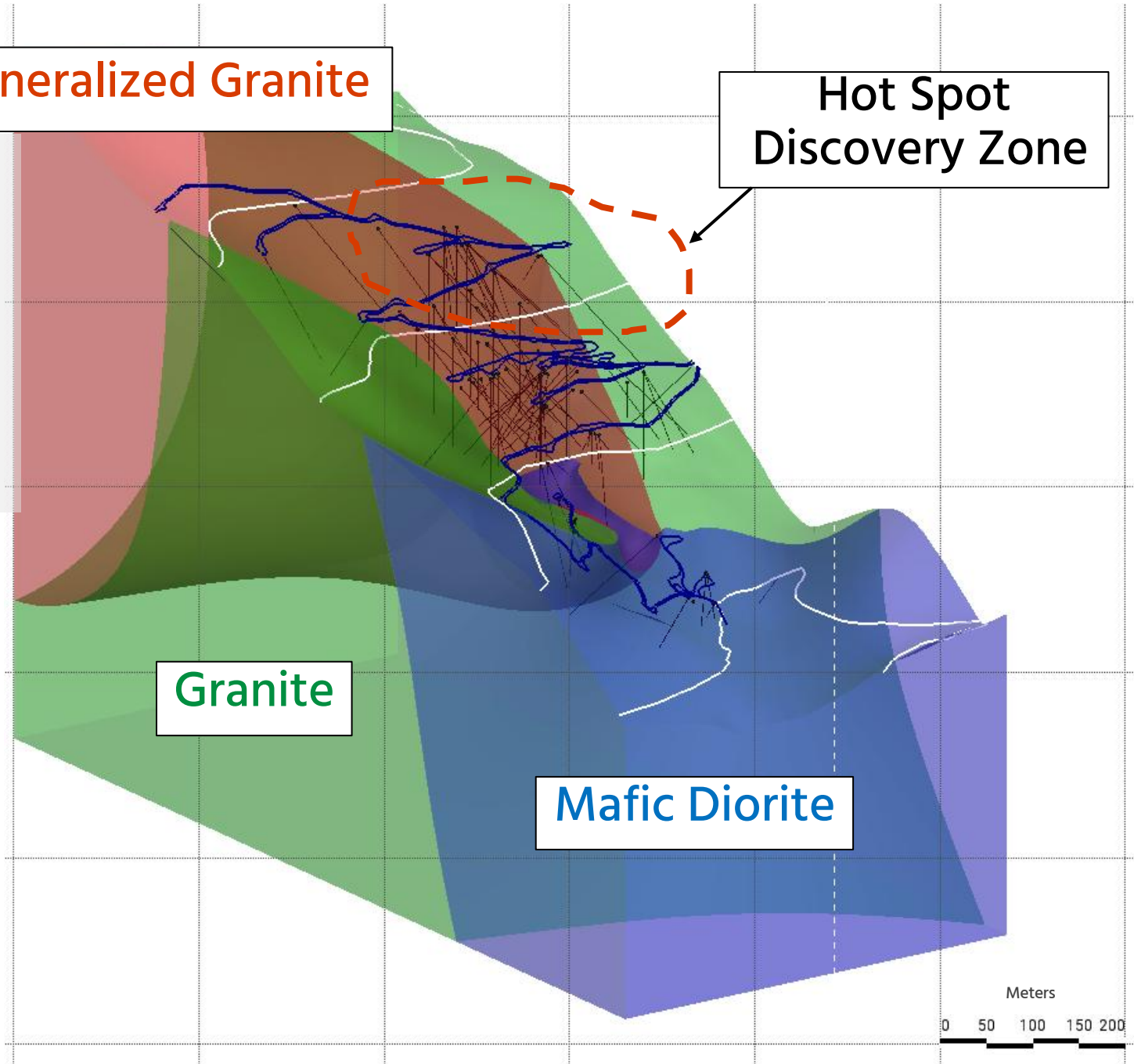
- The Lapon Canyon drill program will consist of systematic drilling on section for geological modelling purposes, exploration drilling to discover new gold mineralization and extend known gold mineralization.
- Follow up drilling for extending strike, width and depth at the Hotspot zone discovery.
- Drill program at Pikes Peak, following up on the initial 2022 drill program and 2024 underground channel sampling of an old Audit returned significant results. Drilling will focus on extension and delineation of the significant historical mine workings.
- The Rattlesnake Range Front follow up drill program will focus on the extensive historical mining activities, including several adits. Within the altered sheared zone encountered at Lapon Canyon, Rattlesnake is some 600 meters lower and 3 km on strike from Lapon Canyon.



Mineralized Granite

Hot Spot
Discovery Zone

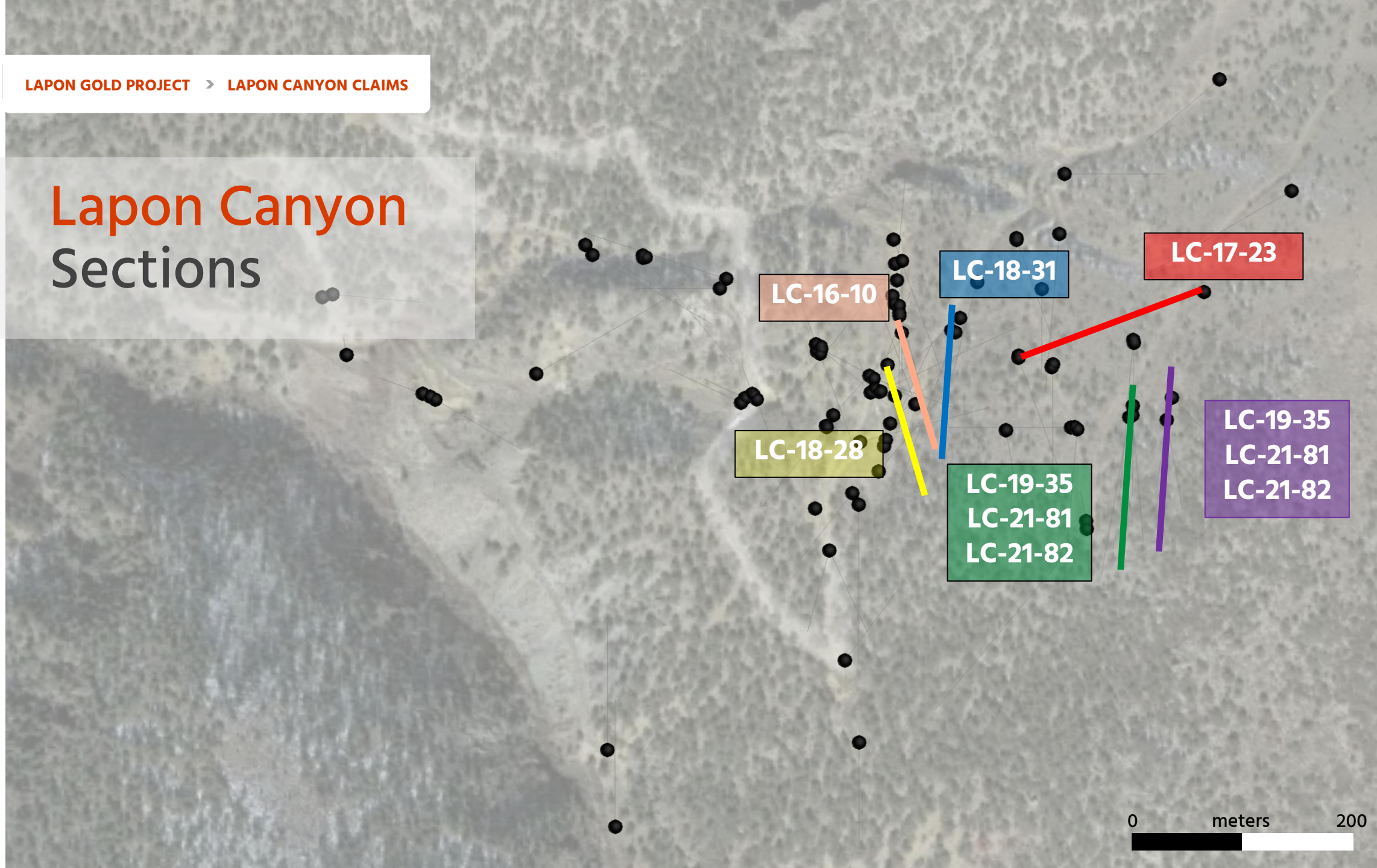
Drill Plan With Road View Showing Geology And New Discovery



- Southeast viewing 3D Geological Model with Drill Traces



Lapon Canyon Sections

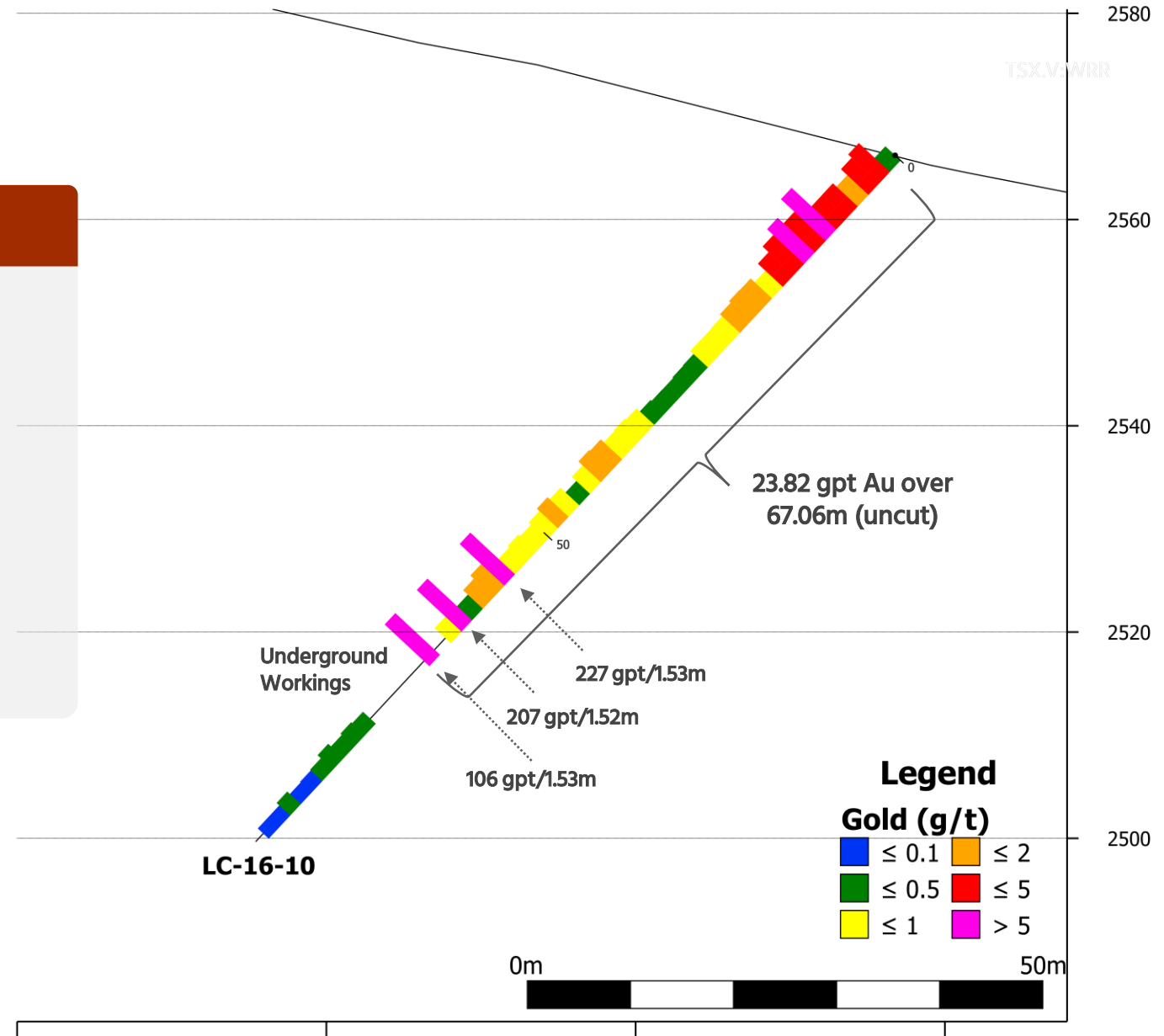




The Lapon Gold Project

Cross Section Looking West On Hole LC-16-10 Showing Underground Sampling and Historic Working

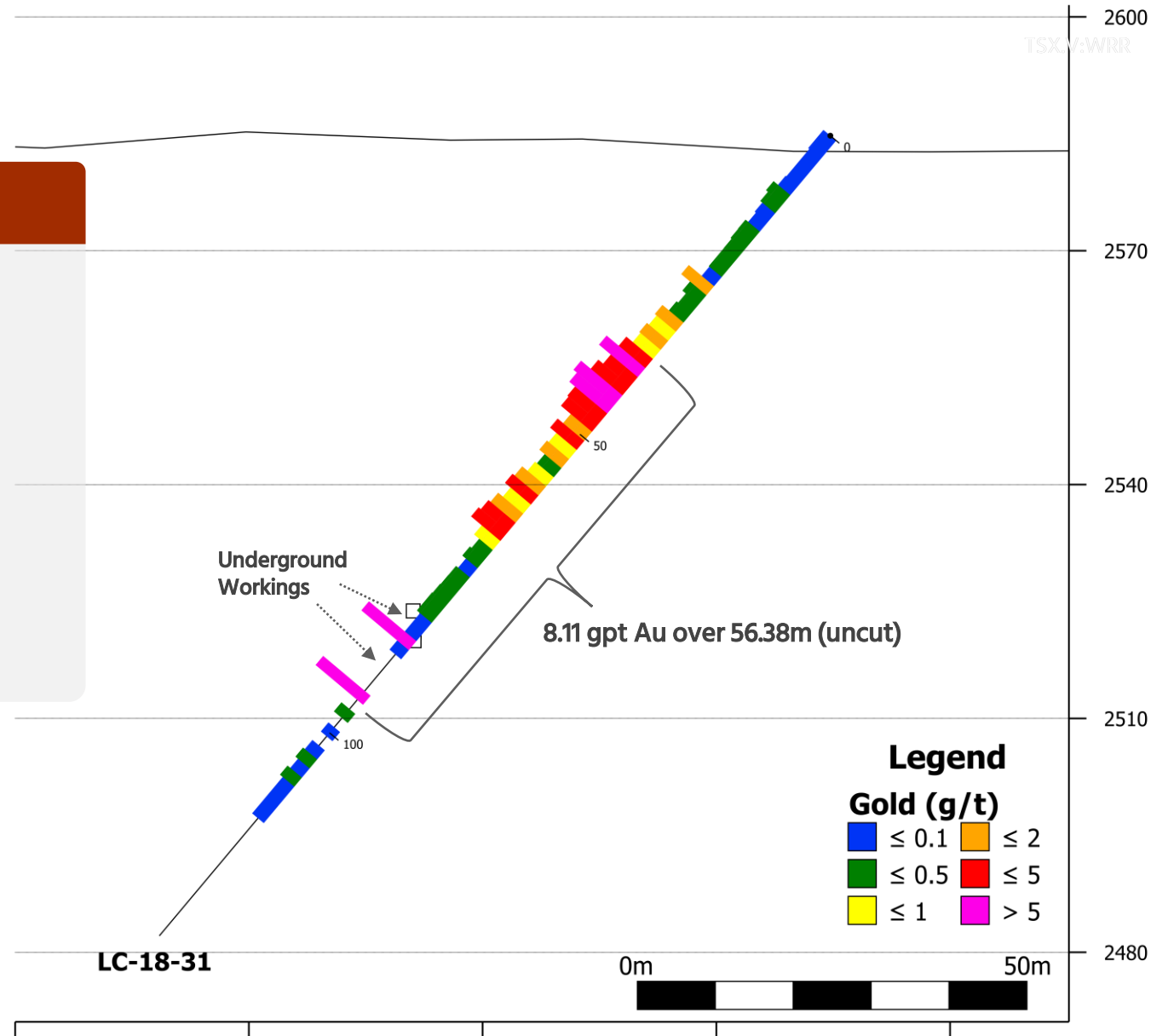
- Assay values corresponding to the intersection of the old underground workings.





The Lapon Gold Project

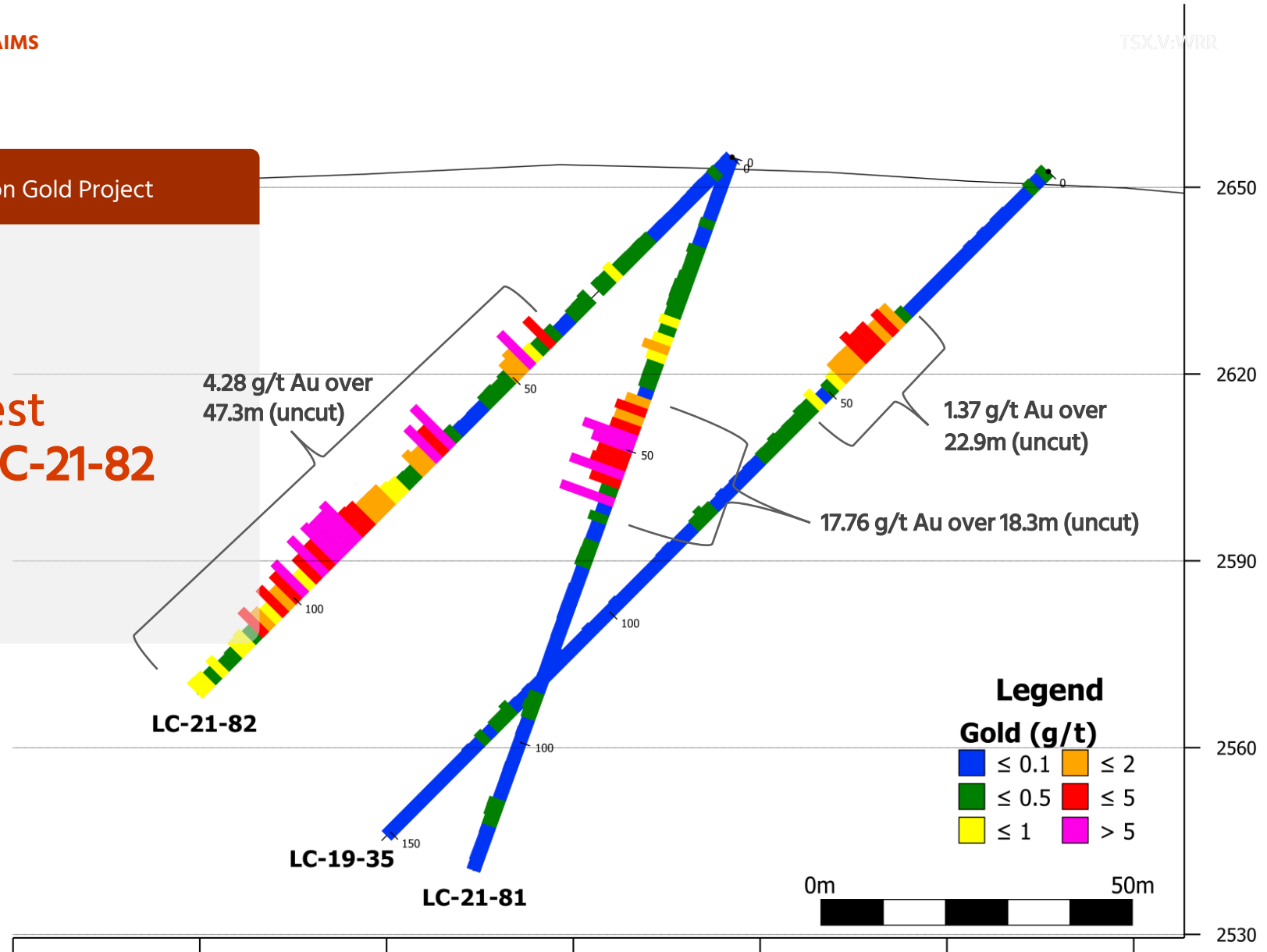
Cross Section Looking West On Hole LC-18-31 Showing Underground Sampling and Historic Working





The Lapon Gold Project

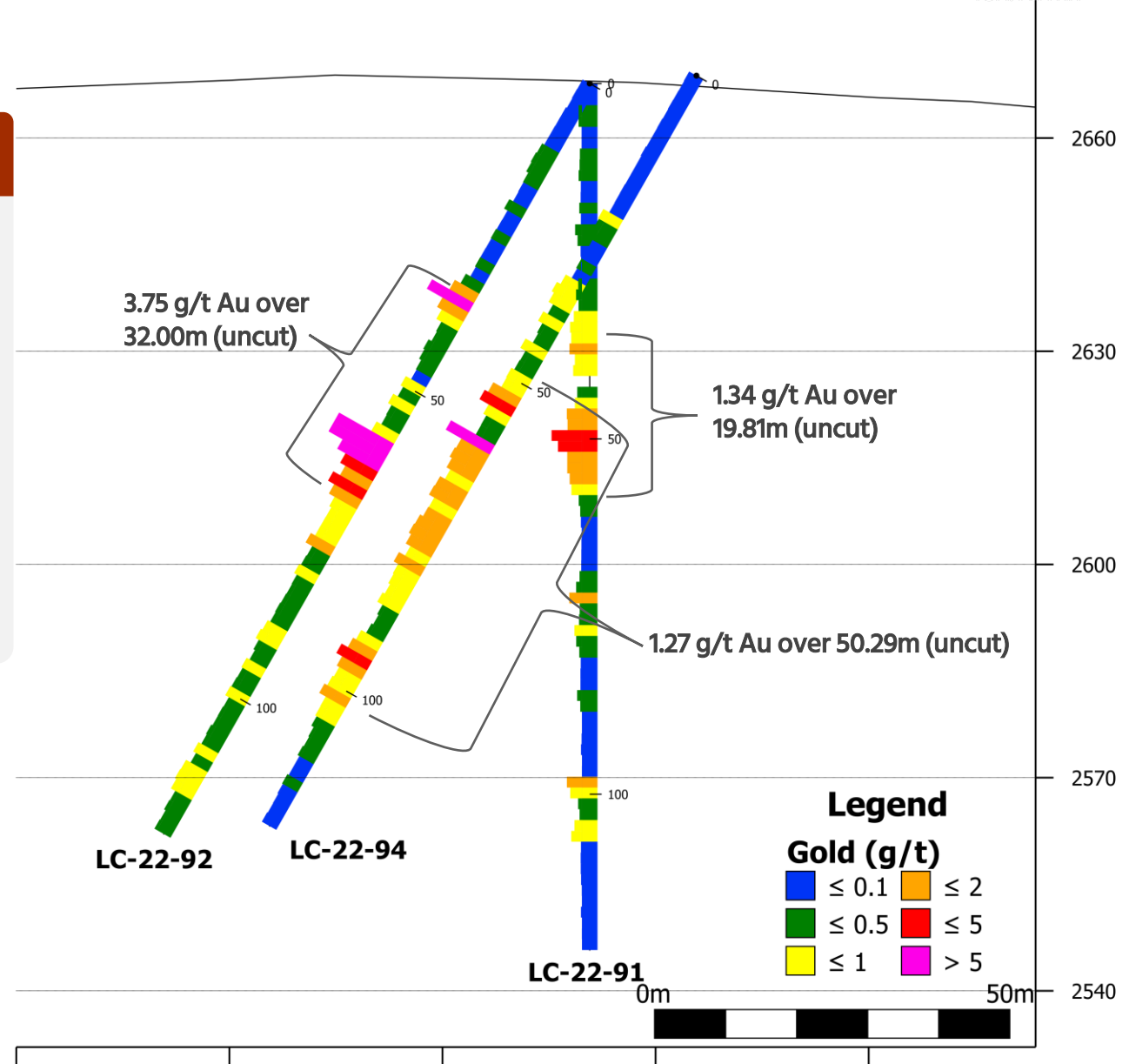
Cross Section Looking West
Holes LC-19-35, LC-21-81, LC-21-82





The Lapon Gold Project

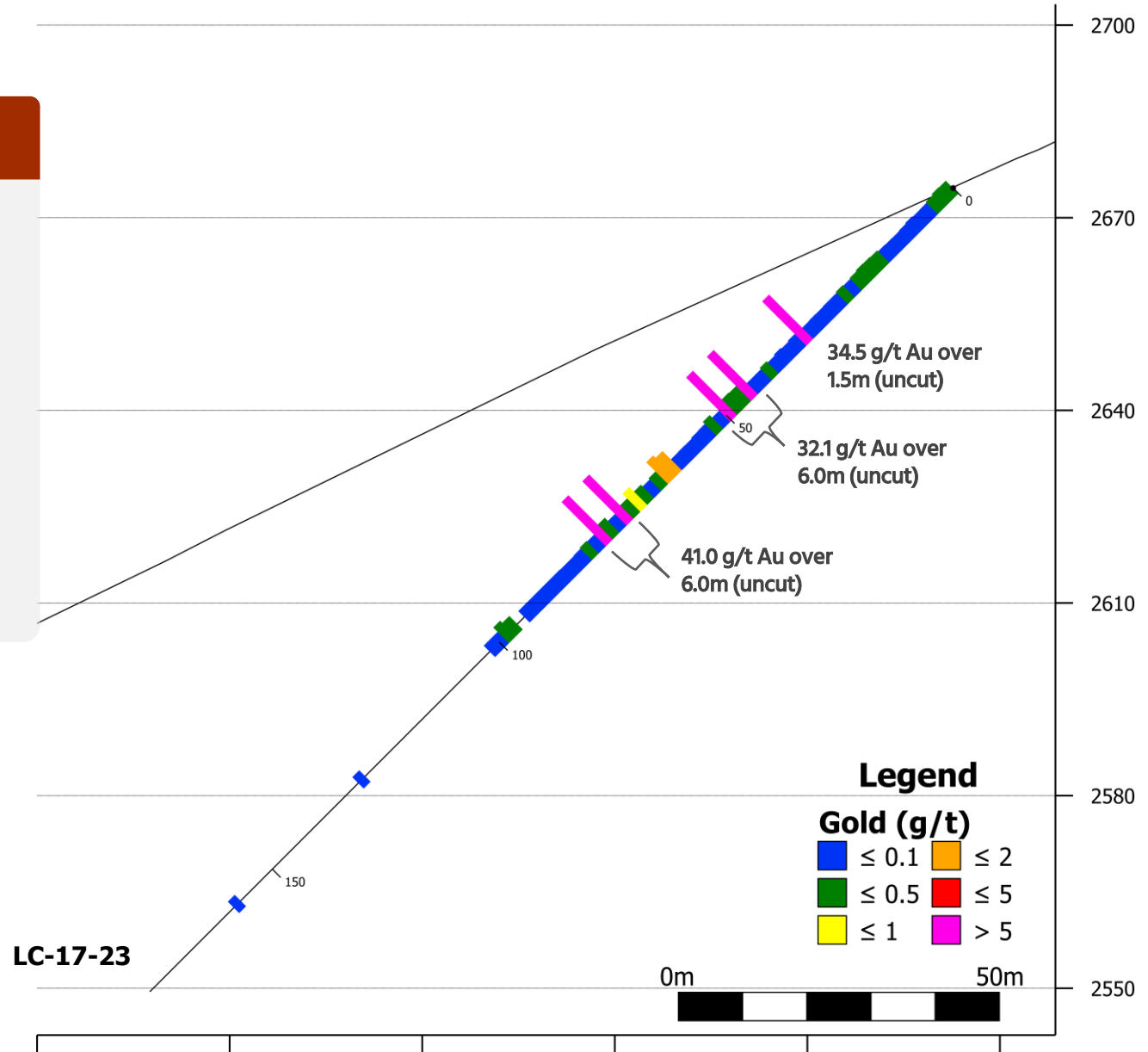
Cross Section Looking West Holes LC-22-91, LC-22-92, LC-22-94





The Lapon Gold Project

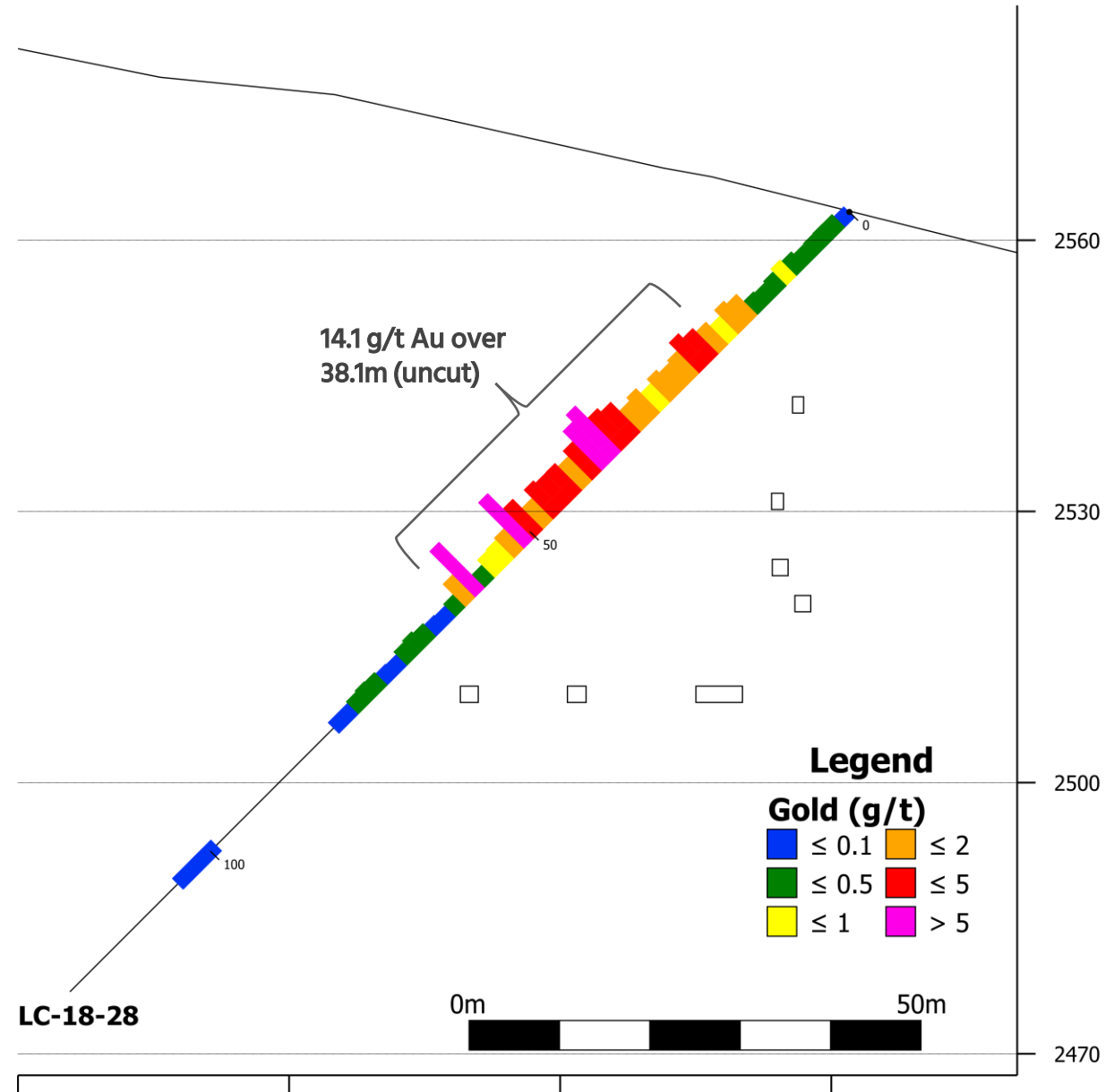
Cross Section Looking North Hole LC-17-23





The Lapon Gold Project

Cross Section Looking West Hole LC-18-28





Range Front & Rattlesnake Claims

The Lapon Gold Project

- Recent discovery of an intensely altered silicified zone with sulphide mineralization on the range front of the Lapon Project. The zone consists of sedimentary rocks and shows evidence of historical workings and one Adit.
- Rattlesnake property contains numerous historical workings consisting of, several adits at different levels, underground workings with vertical shafts, and a network of existing roads providing access to connect all the historical workings.
- Recently Acquired Rattlesnake Property, 15 unpatented lode claims on adjoining ground south hosting possible extensions of the Lapon project's recently discovery range front zone.
- Initial Prospecting Results returned an impressive 17.35 Au g/t (chip sample from inside Adit) Zone is trending and open to the North and South.





Pikes Peak Claims

- Road access completed and fully drill permitted. Small successful initial drill program in 2022.
- 2024 underground mapping and channel sampling program returned significant results
- Planned follow up 2025 drill program at Pikes Peak, focused on extension and delineation of the significant historical mine workings.

2024 PIKES PEAK UNDERGROUND CHANNEL SAMPLING HIGHLIGHTED RESULTS

Sample #	Material	Au g/t
A-5	Adit Wall	36.4
B	Adit Wall	6.55
C-1	Adit Wall	19.8
C-4	Adit Wall	3.68
C-5	Adit Wall	9.81
C-6	Adit Wall	10.73
C-7	Adit Wall	6.07

The Lapon Gold Project





The Lapon Gold Project





**Michel David, BSc, President & CEO,
Director**

Mr. David has over 35 years of experience in geology and geophysics, base metal and precious metal exploration and mining. He obtained a BSc in geology from McGill University in 1975 and has managed numerous projects in southern Africa, Brazil, Colombia, the Philippines, Korea and throughout North America with emphasis in the Province of Quebec. Mr. David has been a director and officer of several mining exploration companies based in Val d'Or, Quebec. Under his guidance a number of these companies made significant gold discoveries exploring and developing both from surface and underground.

Christopher J. Hobbs, CA CFO

Mr. Hobbs has worked with several public companies, accounting and securities firms in an accounting, management, director or CFO role in the past 20 years. Mr. Hobbs co-founded Pine Point Capital Advisors Inc., in January 2008 and has extensive experience in the investment banking sector. He served as a Senior Manager of KPMG LLP from 1990 to 1999. Mr. Hobbs is a member of the Chartered Accountants of Ontario and holds a bachelor of business administration degree from the Schulich School of Business at York University.

Eric Falardeau, Director

Mr. Falardeau is an independent director and member of the Company's the Audit Committee. Eric has extensive experience in supplying industrial materials for the mining and various manufacturing industries. He is currently regional sales manager for a global industrial supply company, based out of Val d'Or Quebec in northwestern Quebec, Canada.

Renè Lessard, Director

Mr. Lessard is an independent sales consultant. He was the Sales Manager of Campagna Motors Inc. and T-Rex Vehicles Inc. Renè is a former director of Nemaska Lithium Inc. (TSX:NMX) and Monarques Resources Inc. (TSX:MQR)

Management



Capital Structure

Issued & Outstanding	48,618,362
Warrants	11,487,975
Options	2,900,000
Fully Diluted	62,868,837

TSX.V:
WRR

As of March 1, 2025



Walker
River
Resources

Head Office:

Suite 820-1130 West Pender St.
Vancouver, BC V6E 4A4

TSX.V:WRR

www.wrrgold.com

Nevada Office:

103 S. Main St.
Yerington, NV 89447, USA

Phone: 1.819.874.0030

Fax: 1.888.909.1033

Email: info@wrrgold.com

