



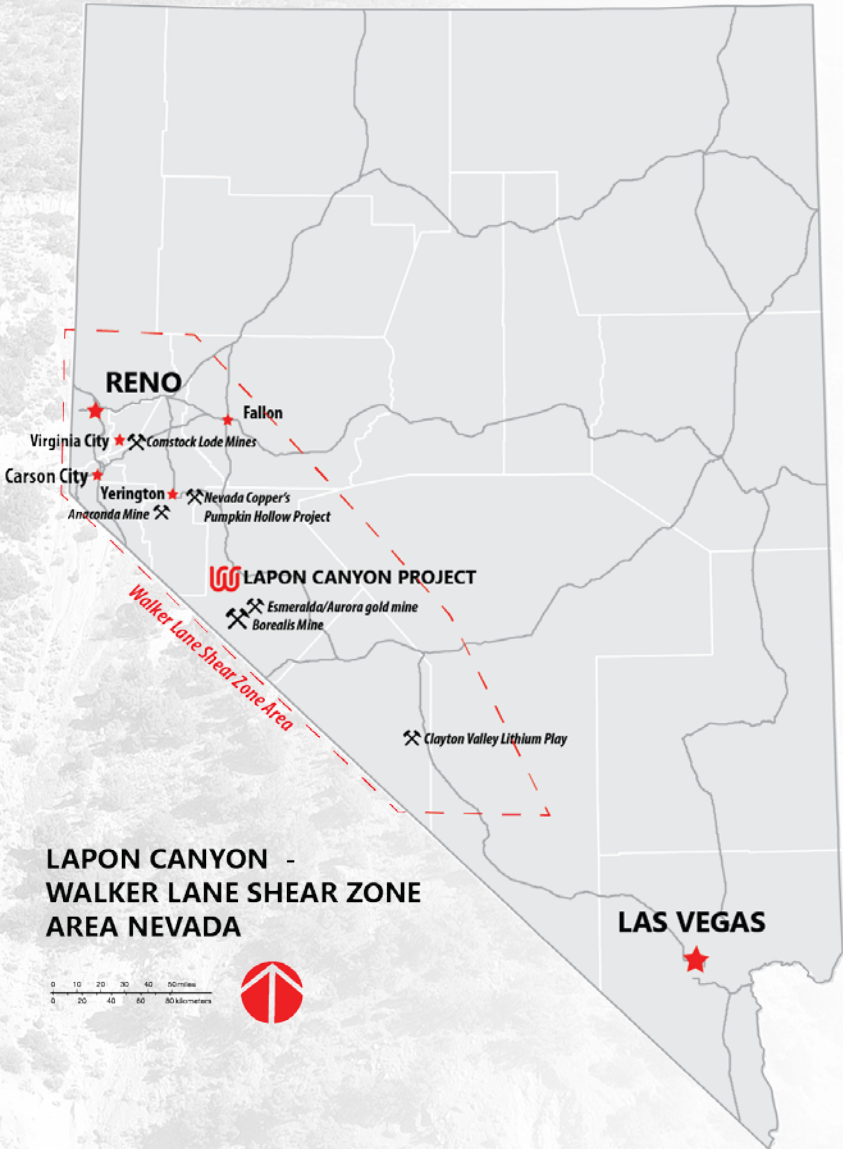
Walker River Resources

Corporate Presentation July 2017

Certain statements herein may contain forward-looking information within the meaning of applicable securities laws. Forward-looking information appears in a number of places and can be identified by the use of words such as “intends” or variations of such words and phrases or statements that certain actions, events or results “may”, “could”, “would”, “might” or “will” be taken, occur or be achieved. Forward-looking information includes statements regarding the Company’s exploration plans with respect to the Property and the estimation of mineral resources and are subject to such forward-looking risks, uncertainties and other factors which may cause the Company’s actual results, performance or achievements, or industry results, to be materially different from any future results, performance or achievements expressed or implied by such forward-looking information. Such risks include gold price volatility, change in equity markets, the uncertainties involved in interpreting geological data, increase in costs and exchange rate fluctuations and other risks involved in the gold exploration and development industry. There can be no assurance that forward-looking information referenced herein will prove to be accurate, as actual results and future events could differ materially from those anticipated in such statements or information. Also, many of the factors are beyond the control of Walker River Resources. Accordingly, readers should not place undue reliance on forward-looking information. All forward-looking information herein are qualified by this cautionary statement. The Company does not undertake to update such forward-looking information except in accordance with applicable securities laws.



Lapon Canyon Project Location



- Initial 2015 and 2016 Drill Program Returned Significant Gold Mineralization
- 2016 Drill Program verified position and grades of presently inaccessible historical mined out areas
- Historical High Grade gold mining in 2000 feet of underground workings
- Minimal Modern Exploration
- Discovery of an previously unknown potential porphyry system
- Located in Mining friendly Nevada
- Permits are in place
- Lapon Canyon Gold project has significant exploration and expansion potential
- Walker Recently (July/17) Increased its Ownership to 100% Buying out JV Partner (30%)
- Increased Land holdings Acquiring an Additional 60 claims Covering Extensions Of Known Mineralized Zones



2015 Drill Program Result Highlights



- The first two RC drill holes were designed to test the upper portion of the Lapon Rose zone Key highlights of these initial results include:
- RC drill hole LC 15-01 intersected 1.5m of 292 g/t Au at a depth of 18.3m-19.3m. RC hole LC 15-02 intersected 1.5m of 66.8g/t Au at a depth of 30.5m-32m, including 1.5m of 43.7g/t Au at a depth of 50.3m-51.8m.
- RC drill hole LC-15-03 intersected 7.62 g/t Au over 19.8 meters.
- RC drill hole LC 15- 04 intersected a mineralized cross fault structure in previously unmineralized diorite

Drill Hole	From m	To m	Length** m	Assay* (g/t Au)
LC 15-01	7.6	19.8	12.2	8.41
Including	18.3	19.3	1.5	292.0*
LC 15-02	30.5	53.4	22.9	7.84
Including	30.5	32	1.5	66.8*
Including	50.3	51.8	1.5	43.7*
LC 15-03	7.6	25.9	18.3	7.62
Including	13.7	15.2	1.5	22.3
Including	19.8	21.3	1.5	21.1
LC15-04	56.5	61	4.5	8.25

*Grades cut to 34.28g/t Au (1 oz/ton)

**True widths approx. 65% in LC 15-01 & LC 15-03 and 70% in LC 15-02 & LC 15-04.

2016 Drill Program Result Highlights



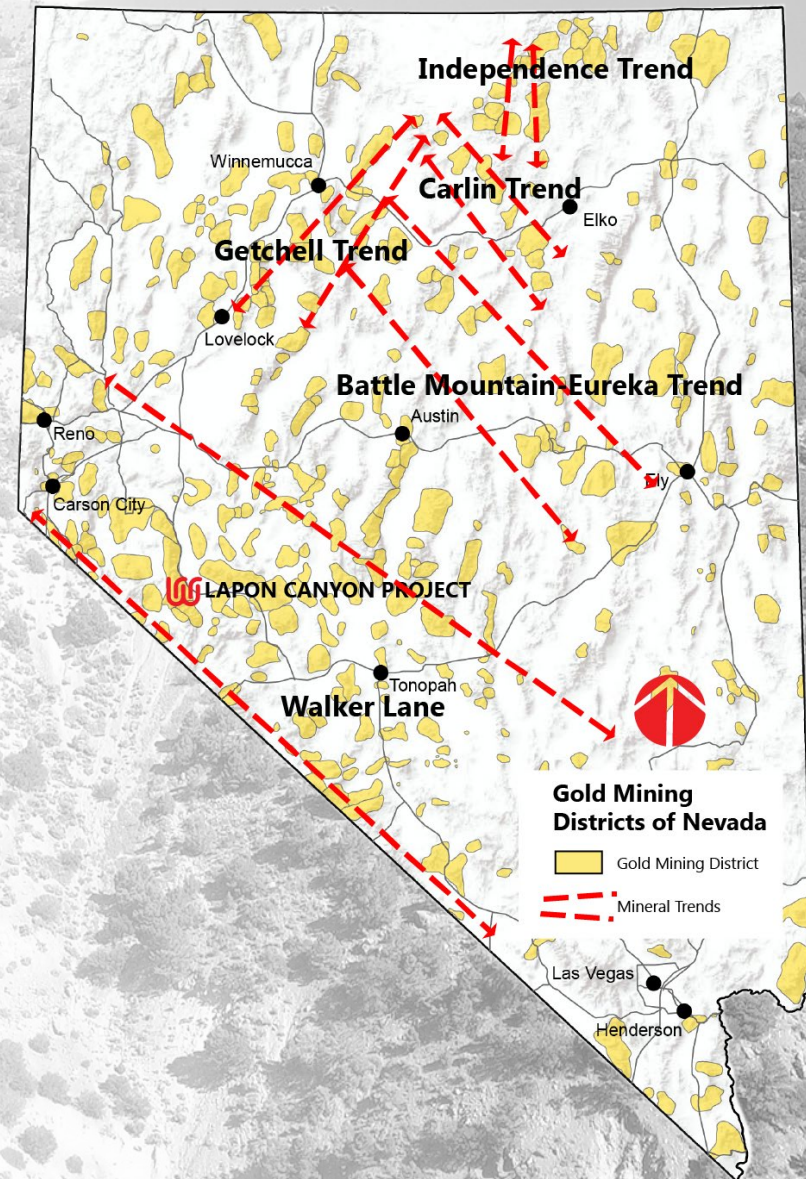
- RC drill hole LC 16-10 intersected 77.62 grams per tonne gold over 12.2 meters uncut (15.38 g/t cut) from 54.9 to 67.2 meters.
- A second zone in RC drill hole LC 16-10 intersected 48.02 grams per tonne gold over 13.7 meters uncut (7.2g/t cut) from 1.5 to 15.2 meters.
- RC drill hole LC 16-11 intersected 39.17 grams per tonne gold over 9.2 meters uncut (10.5 g/t cut) from 15.2 to 24.4 meters.
- RC drill hole's 9, 10, and 12 were drilled in the Upper Lapon Rose zone in an altered sheared and faulted granodiorite and quartz monozonite porphyry.
- RC drill hole LC 16-10 was designed to verify the position of previously reported, presently inaccessible mined out area. The drill hole successfully intersected the mined out stope at the reported location and verified the width at some 8 meters at a depth of 68 meters

Drill Hole	From m	To m	Length** m	Assay (g/tAu) Un Cut	Assay* (g/tAu) Cut
LC16-10	1.5	15.2	13.7	48.02	7.21
Including	9.1	10.6	1.5	451	34.28
	54.9	67.2	12.2	77.62	15.38
Including	54.9	56.4	1.5	227	34.28
	61	62.5	1.5	207	34.28
	65.5	67	1.5	106	34.28
LC16-12	15.2	24.4	9.2	39.17	10.53
Including	15.2	16.7	1.5	207	34.28
	16.7	18.2	1.5	13.55	
	22.9	24.4	1.5	12.95	
LC16-09	13.7	18.3	4.5	9.69	

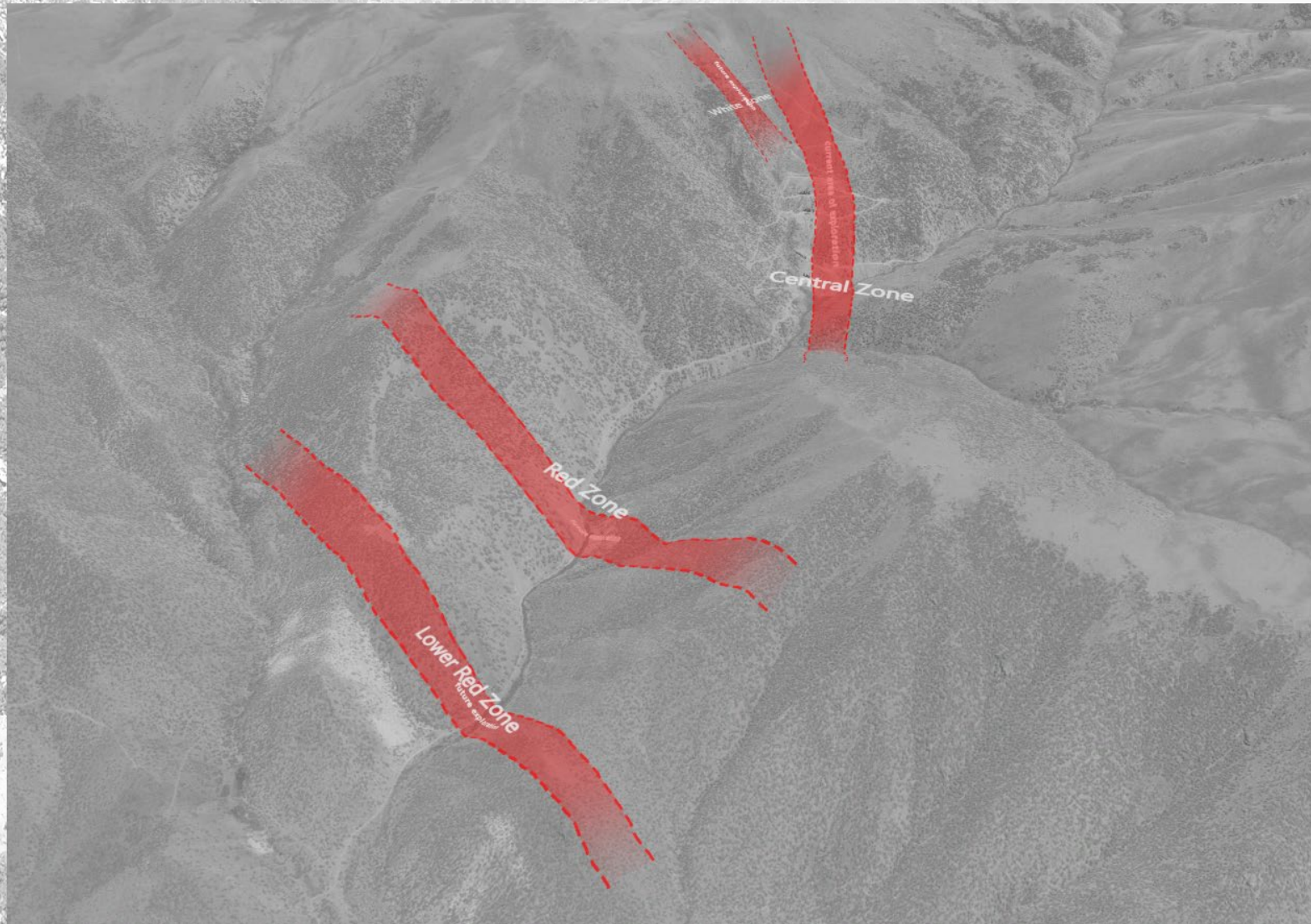
*Grades cut to 34.28g/t Au (1 oz/ton)

**True widths approx. 80% in LC 16-09,10, and 12.

- The Walker Lane shear zone straddles the border between Nevada and California and has a long history of exploration and mining
- The majority of gold deposits occur in the Walker Lane shear zone, which is a 100-km wide, NW trending structural corridor extending southeast from Reno towards Las Vegas
- The Walker Trend has hosted historical gold producers such as the famous Comstock Lode silver/gold mine which is located to the north of Lapon Canyon. The Comstock Lode is one of the richest silver/gold mines ever found
- The Esmeralda/Aurora mine, also on the Walker Trend and 25 km to the south-west of Lapon Canyon, produced from one bonanza vein one million ounces of gold from only one hundred thousand tonnes of rock



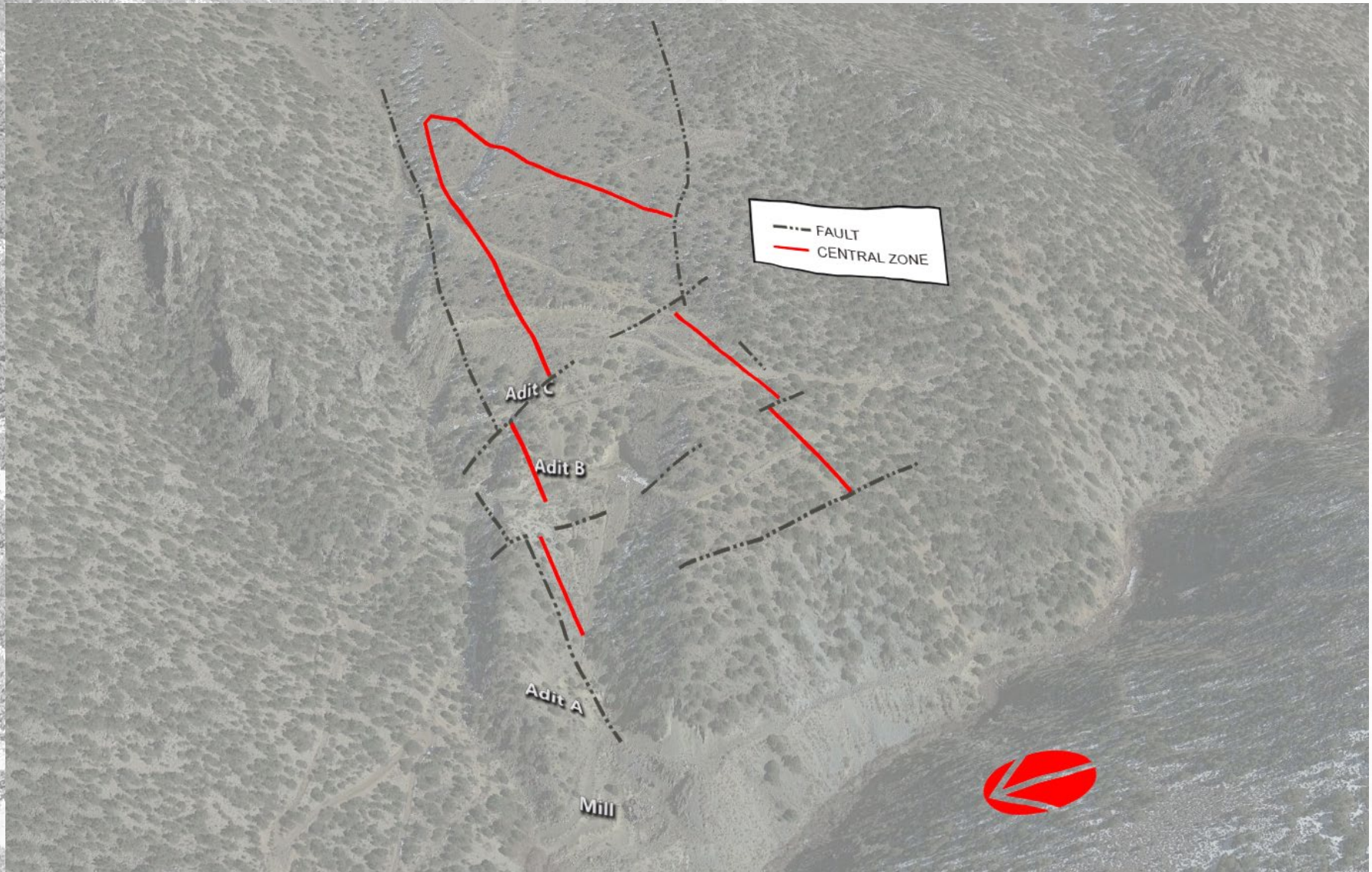
Alteration Zones



Lapon Canyon, Old Mill Site, Portal Access & Central Zone



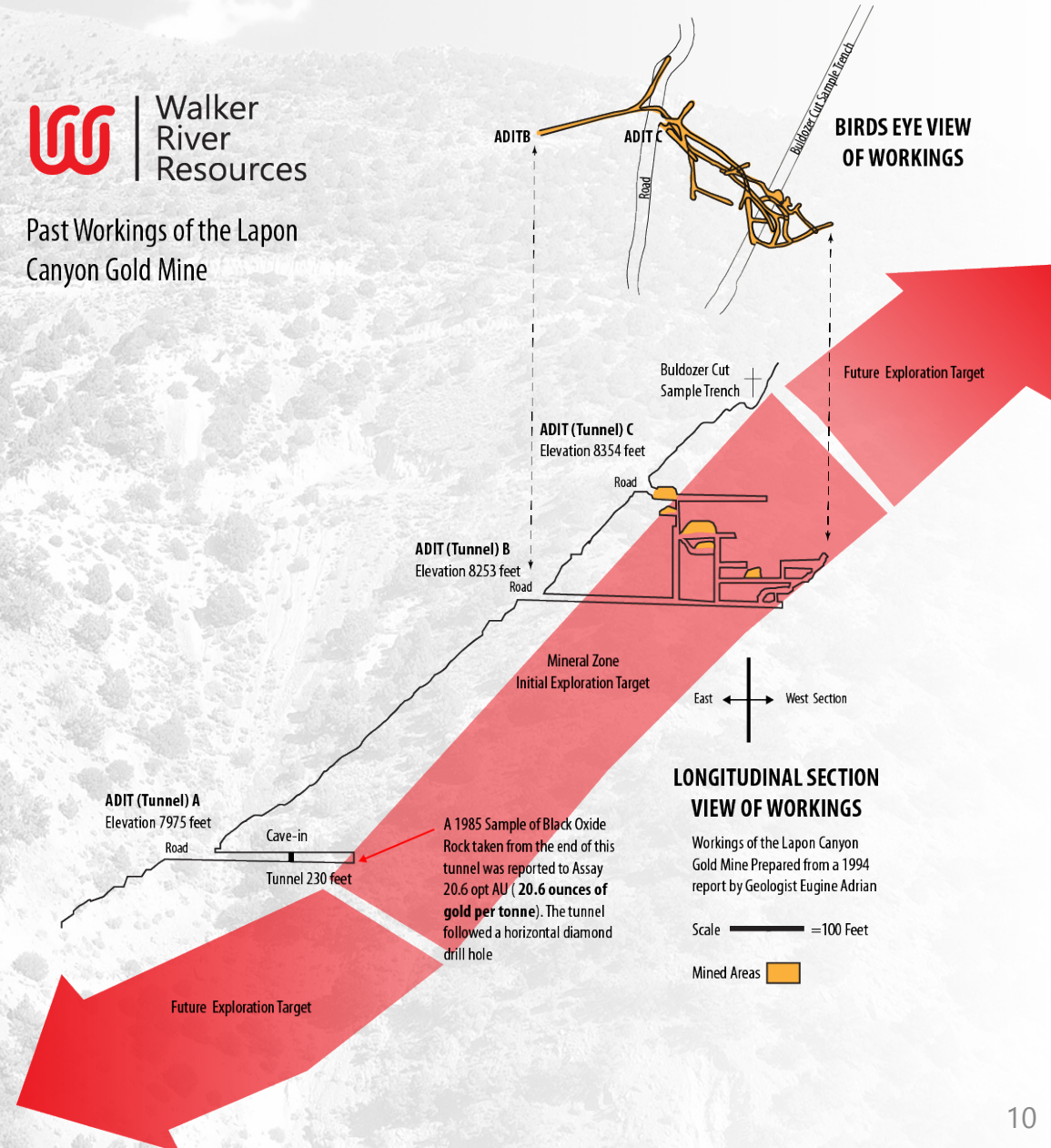
Walker
River
Resources



Old Lapon Canyon Gold Mine



Past Workings of the Lapon Canyon Gold Mine



Sample Plan (Newell, 1936)



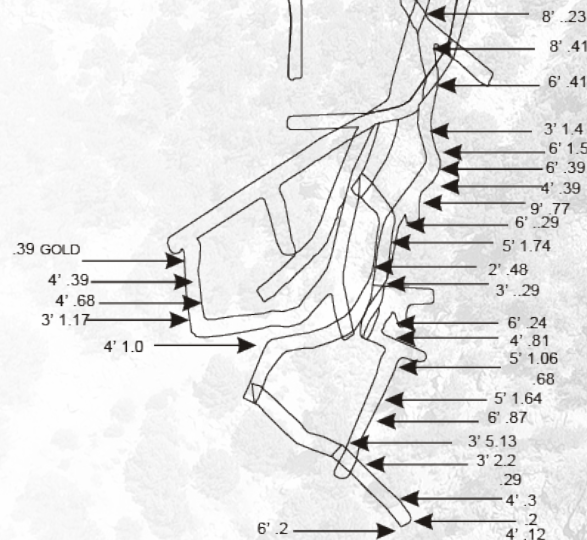
Adit B

Adit C

**SAMPLE PLAN
(Newell, 1936)**

Scale
35 ft

Oz./ton

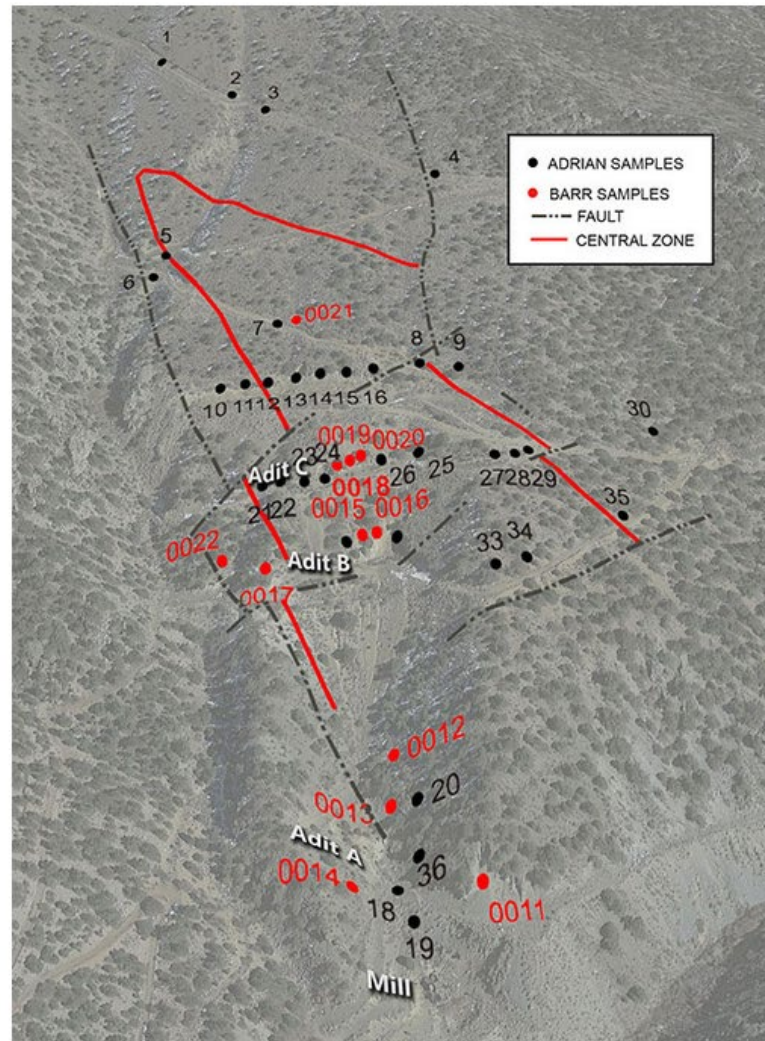


SAMPLE	CUT	oz/ton	g/pt Au
1	8'	0.23	7.86
2	8'	0.23	7.86
3	6'	0.23	7.86
4	3'	1.40	47.82
5	6'	1.50	51.24
6	6'	0.39	13.32
7	4'	0.39	13.32
8	9'	0.77	26.30
9	6'	0.29	9.91
10	1½'	1.74	59.44
11	7'	0.48	16.40
12	3'	0.29	9.91
13	6'	0.24	8.20
14	4'	0.77	26.30
15	5'	1.06	36.21
16	5'	0.68	23.23
17	5'	1.64	56.02
18	6'	0.87	29.72
19	3'	5.13	175.24
20	3'	2.10	74.47
21	3'	0.29	9.91
22	4'	0.30	10.25
23	4'	0.20	6.83
24	4'	0.10	3.42
25	6'	0.45	15.37
26	???	0.33	11.27
27	4'	0.39	13.32
28	4'	0.68	23.22

Surface Samples Adrian & Barr

SURFACE SAMPLES BARR (1994)

SAMPLE	TYPE	GOLD(ppb)
10	3'chip	10
11	25'chip	10
12	12'chip	100
13	40'chip	1795
14	22'chip	810
15	20'chip	15
16	16'chip	85
17	24'chip	10
18	15'chip	1365
19	12'chip	1845
20	12'chip	145
21	30'chip	25
22	20'chip	140



SURFACE SAMPLES ADRIAN (1994)

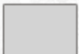


SAMPLE	TYPE	GOLD(opt)
1	60'chip	0.0015
2	30'chip	0.0018
3	30'chip	0.0172
4	40'chip	0.0035
5	40'chip	0.0046
6	30'chip	0.0035
7	20'chip	0.0472
10	50'chip	0.0056
11	50'chip	0.0032
12	50'chip	0.0019
13	50'chip	0.0373
14	50'chip	0.0082
15	50'chip	0.0079
16	50'chip	0.0155
20	25'chip	0.022
21	25'chip	0.0145
22	35'chip	0.0056
23	40'chip	0.0102
24	50'chip	0.0488
25	50'chip	0.0089
26	40'chip	0.0106
27	30'chip	0.0287
28	25'chip	0.0296
29	35'chip	0.0285

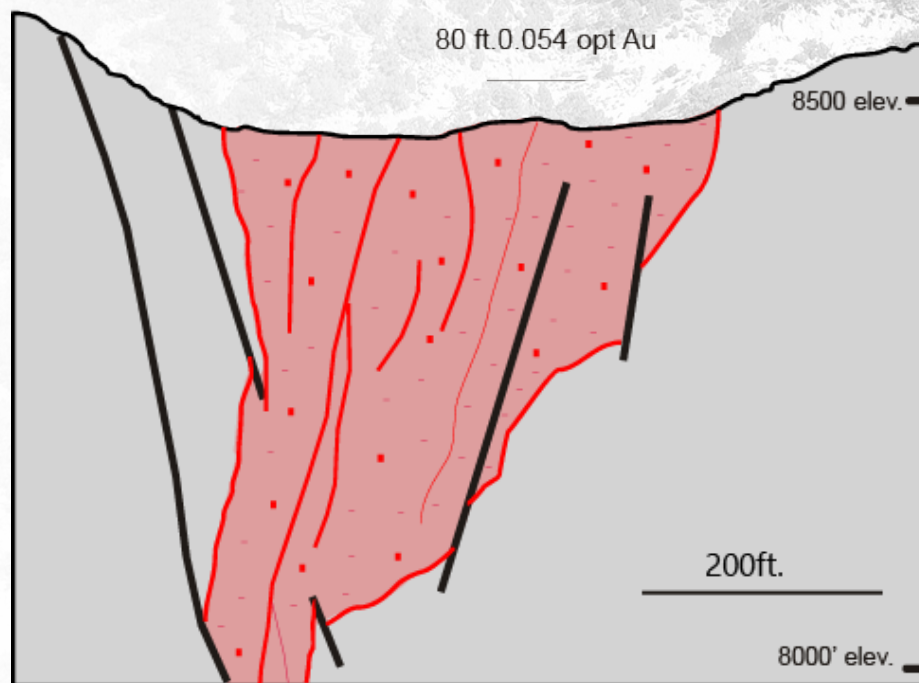
Central Zone Cross Section



CENTRAL ZONE Schematic Cross Section



-  Fresh of Propylitized Granitic Rock
-  Post - Mineral Fault
-  Gold - Bearing Zones
(Quartz-Sericite-Pyrite)





Recent Share Price		\$0.14
Market Cap.		\$13,046,535
Issued		93,189,535
Warrants		11,610,913
Fully Diluted		104,800,448

Head Office:

Suite 830

1130 West Pender St.

Vancouver, B.C. V6E 4A4

Nevada Office:

103 S. Main St Yerington,

NV 89447

Ph. 819 874-0030

Fax 604 683-8605

Email: info@wrrgold.com

Web: <http://wrrgold.com>



Michel David, BSc, President & CEO, Director

Mr. David has over 35 years of experience in geology and geophysics, base metal and precious metal exploration and mining. He obtained a BSc in geology from McGill University in 1975 and has managed numerous projects in southern Africa, Brazil, Colombia, the Philippines, Korea and throughout North America with emphasis in the Province of Quebec. Mr. David has been a director and officer of several mining exploration companies based in Val d'Or, Quebec. Under his guidance a number of these companies made significant gold discoveries exploring and developing both from surface and underground.

Eugene Gauthier, P.Eng, VP of Exploration Director

Mr. Gauthier brings over 25 years of mining experience to Walker River. Mr. Gauthier has worked in production and mining for several Canadian mines, in particular Gwillim, Louvicourt, Western Quebec and Malartic southern. Mr. Gauthier is the Vice President of Exploration for the company.

Denis St. Hilaire, Director

Mr. St. Hilaire is an experienced independent businessman having been involved in numerous business in various sectors. He is currently active in the development of groundwater resources in the Province of Quebec. Mr. St. Hilaire is an independent director and a member of the Company's Audit Committee.

Thomas Schuster, Director

With a degree in Geological Sciences from the University of Toronto, Thomas started his career in the early 1990s as an exploration geologist in the famous Timmins mining camp in Northern Ontario. He then moved to Vancouver and took a position as staff Journalist at the well-known mining publication, The Northern Miner, reporting the merits and shortcomings of Canadian exploration and mining projects worldwide. This built a foundation for his later work as a Mining Analyst for the Toronto-based institutional investment firm, Fraser Mackenzie. Thomas is currently based in Vancouver working as an independent consulting mining analyst.

R. Stuart (Tookie) Angus, Advisor

For the past 35 years Mr. Angus has been focused on structuring and financing both domestic and international exploration, development and mining ventures. Most recently, Mr. Angus was Managing Director of Mergers & Acquisitions for Endeavor Financial. Prior to joining Endeavor Financial he was a former partner and head of Global Mining Group for the Canadian law firm Fasken Martineau DuMoulin. Mr. Angus is the former Chairman of the Board of BC Sugar Refinery Limited, he was a Director of First Quantum Minerals until June 2005, a Director of Canico Resources Corporation until its takeover by CVRD in 2005, a Director of Bema Gold until its takeover by Kinross Gold in 2007, a Director of Ventana Gold until its takeover by AUX Canada Acquisitions in 2011 and a director of Plutonic Power until its merger with Magma Energy in 2011. Currently Mr. Angus is Chair of Nevsun Resources Ltd.